

# Home DECOR

PRESENTATION OF 3 PACKAGES

---

## 1.- PACK STYLE ESSENCE

Composition for 2 bedrooms





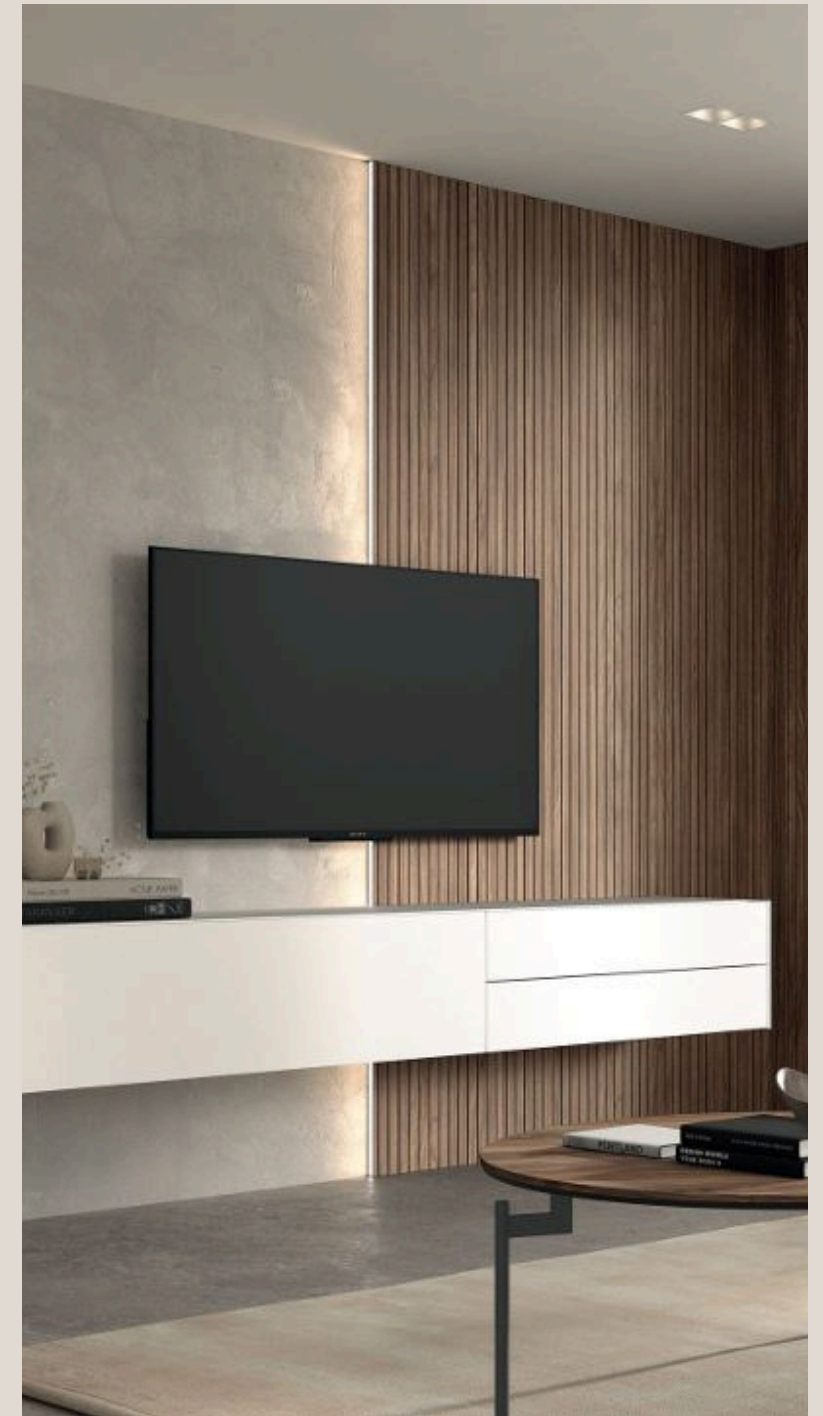
## Advantages of Furniture Packs

Our furniture packs are designed by professional interior designers to perfectly match in style, colour and size.

We simplify choice of your furniture, we will install it within an agreed period and you just have to enjoy it.

With our furniture packs you will reduce your budget, you will get a set of furniture of excellent quality at a lower price than if you bought them separately.

You can change parts of the pack, as well as their finishes as we work directly with the factory. We have more than 4,000 references





# Dining room



4 upholstered chairs, resistant, comfortable and elegant.  
Soft fabric and finishes to choose from



Dining table of 140 in diameter.  
Available 15 models and 9 finishes



Optional central swivel system.  
Perfect for sharing dishes with your family





↑↑ Furniture Packs

# Living room



This simple and light modular proposal mixes striped panel coverings with a different result. It brings warmth, Simplicity and elegance from wood to your living room.  
Light Option Warm

Chaise long envelope of 2.80x1.85 cm. Pine wood structure covered with polyurethane of different thicknesses and densities. Different models with motorized relax.



Combine different heights, different shapes and designs, or match it with your furniture in stone or wood finishes



# Master bedroom



Upholstered headboard 125cm. high, padded to create a relaxation space, finish to choose.



Bed base with large storage capacity, finished in wood or faux leather. Practical and comfortable



Scrolling system or legs for easy cleaning



2 bedside tables. Cushioned closure. Possibility of adding base and upholstery



**Memorylastic ||**



- 1 Tejido STRECH
- 2 ViscoSoft
- 3 Soft Plus
- 4 HR High Resilence 32 Kg/m<sup>3</sup>
- 5 **Viscosens**

• Ambas caras iguales

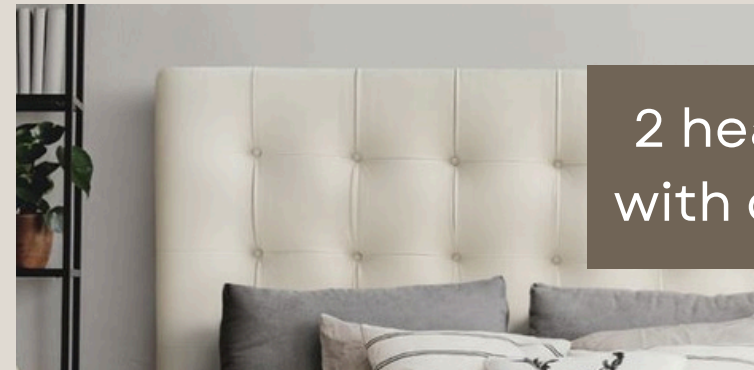


70KG DENSIDAD

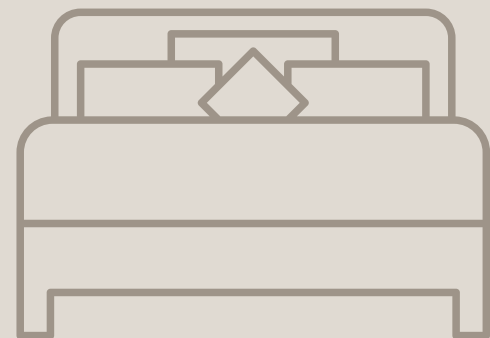
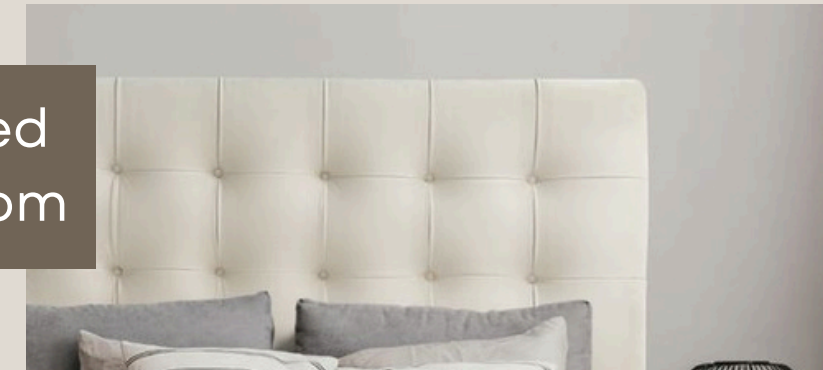
Exclusive core that combines HR and memory foam. Its 70 kg density gives it extra durability and allows the correct alignment of the spine, as it acts actively where the body needs it most



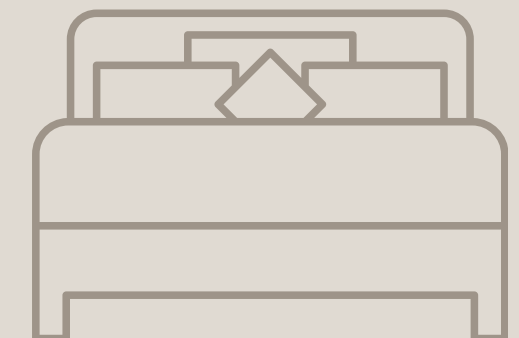
# Bedroom



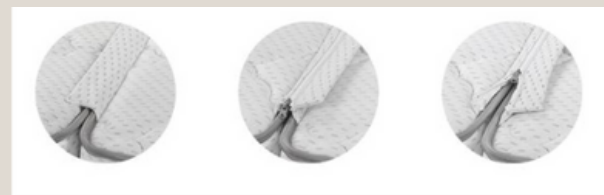
2 headboards upholstered in tufted with different fabrics to choose from



2 bedside tables, fully customizable



2 mattresses of 90 with twin mattress system and make a bed of 180. Sliding and zipper system to join the 2 mattresses



### Activespa Dual

- 1 Tejido STRECH
- 2 Doble capa Viscosoft
- 3 Fiber Air Compact
- 4 Soft Plus
- 5 Top SUAVE, FIRME O MIXTO

HR High Resilence 35 Kg/m<sup>3</sup>

Sistema **naturex**

HR High Resilence 35 Kg/m<sup>3</sup>

**kiesen** 10 AÑOS DE GARANTÍA

\*Modelo abierta con 2 tops

85KG DENSIDAD



# Furniture Package Contents



- ✓ 140 diameter dining table with rotating center
- ✓ 4 upholstered chairs with metal legs
- ✓ Modular living room composition. 257x240 cm.
- ✓ Chaise longue 280x185 cm.
- ✓ Coffee table with metal legs
- ✓ Upholstered headboard
- ✓ Bed base with storage 150x190 cm.
- ✓ Viscoelastic mattress 150x190 cm.
- ✓ 2 bedside tables
- ✓ 2 Upholstered headboard
- ✓ 2 Bed base with storage 90x190 cm.
- ✓ 2 memory foam mattresses with twin system
- ✓ 2 bedside tables

**€ 8,900**

**VAT, Transport and Assembly included.**  
**All our furniture is customizable. Delivery times 45 days.**  
**Items in the packages can be exchanged for others of your choice.**  
**Payment method: 50% on formalisation, 50% on assembly and approval**

**Guaranteed furniture and 100% made in Spain**







# Thank YOU

+34 675 20 78 80

[info@furniturepacks.es](mailto:info@furniturepacks.es)

Mijas Costa (Málaga)

[www.furniturepacks.es](http://www.furniturepacks.es)